

Developing an Oregon Maternal Data Center: Demo of the California System and Plans for an Oregon Pilot

December 2

1:00-3:00pm

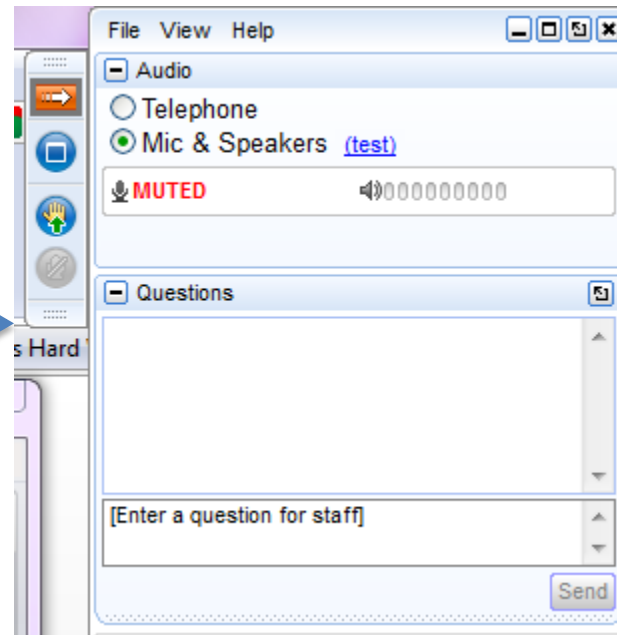
Webinar

Housekeeping Notes

- All lines have been muted.
- We encourage you to type questions in the questions box on your screen.
- You may leave and re-join the webinar at any time.
- Please complete the survey at the conclusion of the webinar (in pop-up window when you close browser).
- Use the chat feature to alert us to any technical difficulties.

We Want To Hear From You!

Type questions into the Questions Pane at any time during this presentation



Presenters

- Q Corp
 - Mylia Christensen, Executive Director
 - Liz Whitworth, Program Consultant
- CMQCC
 - Anne Castles, Project Manager

Agenda

- Introductions/Q Corp Background
- Overview of the Oregon Perinatal Collaborative (OPC)
- Proposed structure for Oregon Maternal Data Center (OMDC)
- Demonstration of Maternal Data Center Tool
- Steps and timeline for initiating participation in MDC
- Thank you/contact information

Q Corp Background & Role

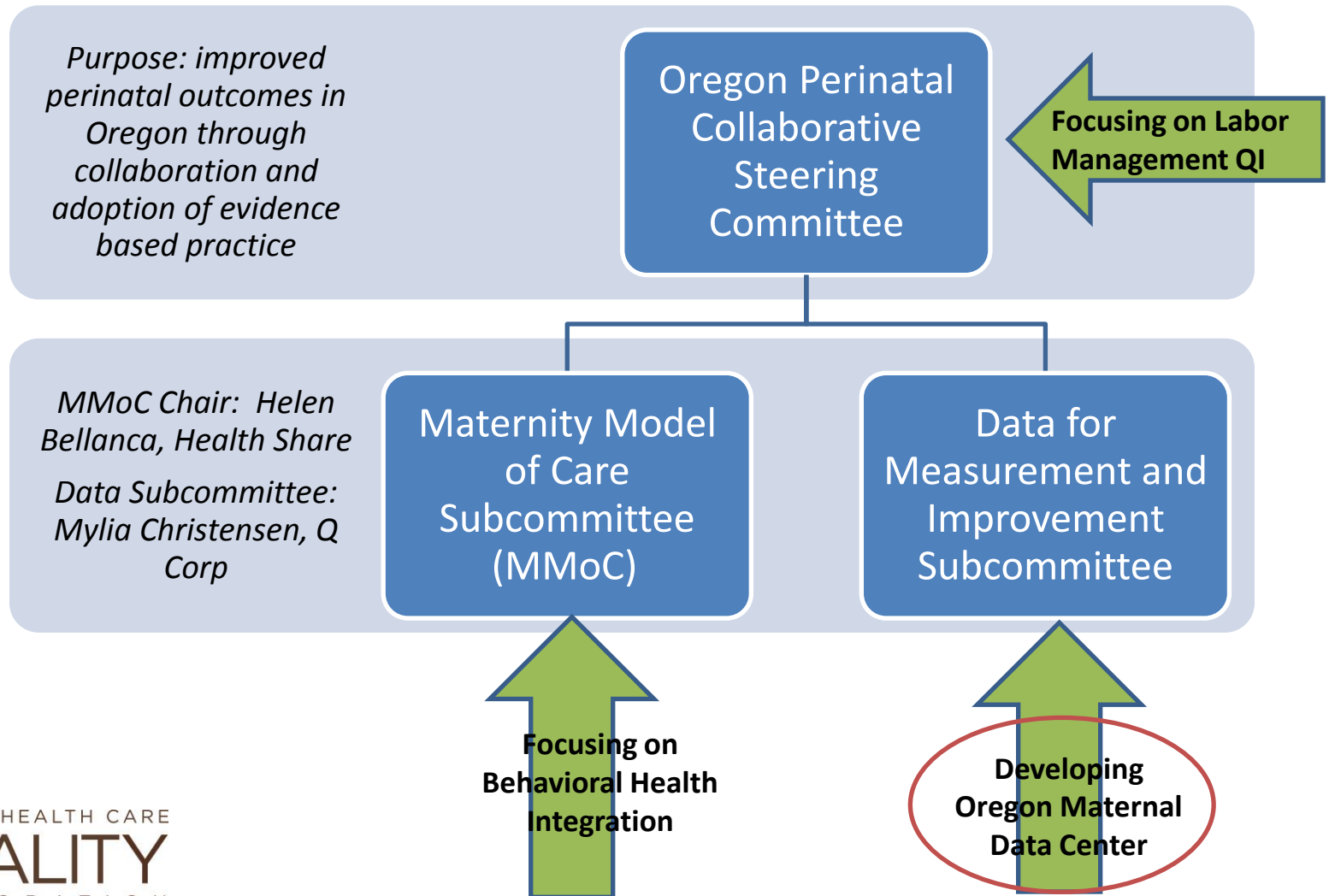
- Q Corp is an independent, nonprofit organization dedicated to improving the quality and affordability of health care in Oregon by leading community collaborations and producing unbiased information.
- We work with the members of our community – including consumers, providers, employers, policymakers and health insurers – to improve the health of all Oregonians.
- Q Corp maintains health plan claims data set (15+ data suppliers) and provider directory
- Q Corp is RWJF *Aligning Forces for Quality* grantee
- Q Corp chairs subcommittee of Oregon Perinatal Collaborative

Oregon Perinatal Collaborative (OPC)

The OPC is a group of healthcare leaders coming together to advocate for improved perinatal outcomes through collaboration and adoption of evidence based practice throughout the state of Oregon.

- Formed in 2011 to focus on Early Elective Deliveries
- Sponsored by the March of Dimes

OPC: Coordinated Efforts to Improve Maternity Care



Proposed Structure for the Oregon Maternal Data Center (OMDC)

- **Collaborative effort** of the March of Dimes, Oregon Perinatal Collaborative, Q Corp, CMQCC, and others (*TBD*)
- **Built off California Maternal Quality Care Collaborative (CMQCC) tool** developed by Dr. Elliott Main and colleagues at Stanford University
- **CMQCC** provides data center application, data and measures specifications, benchmarks and overall updates
- **Q Corp** provides data center management in Oregon, hospital enrollment, OPC measurement and analytics
- **Hospitals enroll and submit data** and are first stakeholder group to use OMDC
- **Maternity clinics, public health agencies, health plans, purchasers, consumers** and others are future users of OMDC tools as additional data sets and measures are added (e.g., health plan claims data)
- **Q Corp and OPC committees** continue to provide overall guidance for OMDC



The CMQCC Maternal Data Center (CMDc)

Anne Castles, MA MPH
Project Manager
Maternal Data Center

What is the Maternal Data Center (MDC)?

An interactive tool to support hospitals' OB quality improvement initiatives and service line management

- Overall hospital performance measures
- Drill-down to the patient level and case review worksheets to identify quality improvement opportunities—for both clinical quality and data quality
- Provider-level statistics—to assess variation within a hospital
- Benchmarking statistics--to compare your hospital to regional, state, and like-hospital peers

Can also provide “public health” tool given availability of statewide data

Maternal Data Center Background

- MDC developed by the California Maternal Quality Care Collaborative (CMQCC) --a research program operated from Stanford University School of Medicine
- Database and application servers on site at Stanford Med-IRT
- Maternal Data Center has been in operation for California hospitals since January 2012 and for Washington hospitals since August 2014
- Now customizing the MDC for the Oregon Perinatal Collaborative

Demonstration of MDC

Please visit the url below to view the interactive demo:

<https://demo.datacenter.cmqcc.org>

Demo Q & A

- **Q:** Do you have CMS and The Joint Commission comparisons?
A: *Not at this time but may be a possible enhancement at a later date.*
- **Q:** Is it possible to record who the actual rendering provider is, so for example, you would know whether the care was rendered by a nurse-midwife, versus an obstetrician, MFM doc, or GP doc?
A: *The decision on which provider to identify as the provider of record within the data submission to CMQCC is up to the hospital submitting the data. For example, hospitals can choose to include either the Attending Provider or the Delivering Provider (and the delivering provider may be any provider type).*
- **Q:** It does look like the system will record who the actual rendering provider is. However, I would want to know if it can tell me, by provider type, how they are performing? For example, if I wanted to know how all the MFMs are doing, vs. CNMs or OBs?
A: *Currently grouping results by provider type is not available, but may be a possible enhancement at a later date.*
- **Q:** Also, when recording who the provider is, is the data based on who the service is billed under, or who actually renders the service? If it's the former, that's a problem, since many services get billed incident to under a single provider's number, or may be billed under a group number.
A: *This is determined by the individual hospital. For each maternal record, the hospital will submit the NPI number of whichever provider that they deem "accountable" for the birth.*
- **Q:** Will routine corrections to records (as records are corrected at hospitals after uploads) be handled by the next data upload(s)? or another method?
A: *Corrections can either be made manually (on a case-by-case basis) or through a supplemental data upload that overwrites the existing information. In general however, hospitals submit data for each new month only (and do not re-submit prior months' data)*
- **Q:** Can one see the relative contribution of hospitals to the regional rate (e.g. top volume hospitals and percent of deliveries of total regional deliveries)?
A: *Not currently, this feature could be included in the Oregon build if desired.*
- **Q:** Can there be more than 1 providers included per delivery
A: *Not currently, this is an enhancement that could be added at a later date.*

Participation Steps

What?	When?
<p>Technical Meeting</p> <ul style="list-style-type: none"> ▪ Opportunity to provide feedback on data submission process and draft specifications 	<p>Mid-January 2015</p>
<p>Participation Agreement, BAA and Enrollment Fees</p> <ul style="list-style-type: none"> ▪ Between Hospital, Q Corp and CMQCC ▪ Hospital enrollment fees paid to Q Corp 	<p>Target: Available by Feb 2015 for execution by 3/31/15</p>
<p>Data File Creation</p> <ul style="list-style-type: none"> ▪ Discharge Data File <ul style="list-style-type: none"> ○ Mimics what hospital already reports ▪ Maternal and Newborn Clinical Files <ul style="list-style-type: none"> ○ GA, Parity, Birthweight, Apgar Score 	<p>Data specifications ready by February 2015</p>
<p>Hospital Registration in MDC</p> <ul style="list-style-type: none"> ▪ 5-minute process! 	<p>Target: By 3/31/15</p>
<p>First Data Submission</p> <ul style="list-style-type: none"> ▪ Start with 3 months of baseline data 	<p>Target: By 3/31/15</p>
<p>CMQCC Training for your Hospital Team</p>	<p>Post data submission</p>

OMDC: Pilot Phase Hospital Fees

OMDC Pilot Phase Hospital Fees*	
	Pilot Phase 2015
Hospitals w/ 1,100 or more annual deliveries	\$10,000
Hospitals w/ 500-1,099 annual deliveries	\$7,000
Hospitals w/ < 500 annual deliveries and CAH**	\$3,000

*Note: Q Corp grants and other sponsorship will also fund the OMDC.
**CAH-Critical Access Hospitals

Questions and Additional Information

For general OMDC Qs:

Mylia Christensen

Executive Director, Q Corp

Mylia.christensen@q-corp.org

For Pilot Phase Qs:

Liz Whitworth, MPH

Program Consultant

whitworth42@gmail.com

Informational materials posted at:

<http://www.q-corp.org/maternity-care>

THANK YOU!